

# Kype Muir Wind Farm Update

*Also includes details on the  
Kype Muir Wind Farm Extension*

We invite you to public exhibitions to view  
our new proposals to increase the efficiency  
of the Kype Muir Extension at:

## Ballgreen Hall

34 Glasgow Road, Strathaven ML10 6LZ

On the following dates:

**Tuesday 27th March 2018**

**Wednesday 28th March 2018**

**Between 2:30pm and 6:30pm**

*For those unable to make it to Strathaven we will be providing transport to and  
from the venue. If you require transportation please contact Jeannie by Monday  
19th March using the details on the back page.*

You will also be able to view the exhibition  
information and leave any comments at:

- Sandford Village Hall
- Lifestyles, Stonehouse
- Lesmahagow Library
- Blackwood and Kirkmuirhill Community Wing



100m to tip turbines at West Durham Wind Farm

## Energy for everyone's benefit

We look forward to meeting you  
at the public exhibitions and  
receiving your feedback on our  
new proposals to increase the  
efficiency of Kype Muir Extension

### AT THE EXHIBITIONS, YOU CAN:

- View and discuss the amendments to Kype Muir Extension
- Share your views and provide feedback to the team on our project feedback forms
- Hear about the construction work on Kype Muir Wind Farm
- Learn how we are delivering on our commitment to the South Lanarkshire economy
- Discuss how Kype Muir and the Extension could help to deliver your community action plans



# In case we haven't met yet



Hook Moor Wind Farm (125m to tip turbines)

West Durham Wind Farm (100m to tip turbines)

Banks Renewables is part of the Banks Group and provides renewable energy to help meet our society's demand for energy in a sustainable and considerate way.

**Development with care** is at the heart of our way of working, and it's proven in every one of our projects by actions, more so than words. Respect and consideration for your environment, your community and our customers, employees and suppliers are at the centre of everything we do.

## Your personal contact

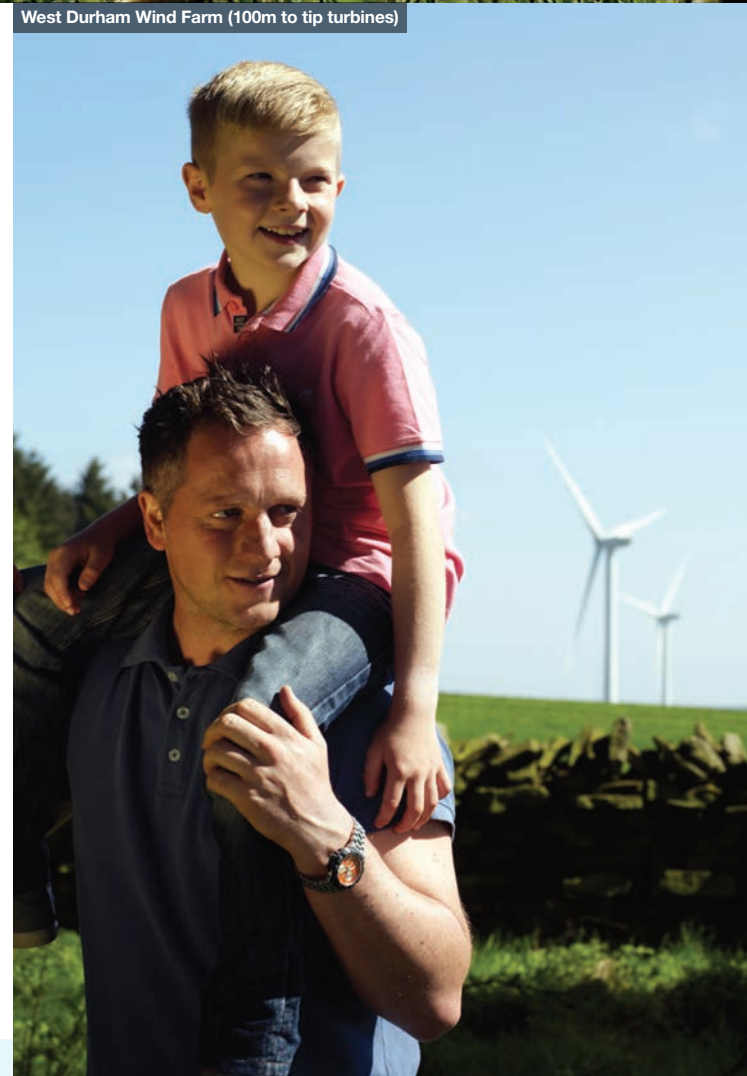


**Jeannie Kielty**  
COMMUNITY RELATIONS MANAGER

Jeannie is your community relations manager for the Kype Muir Extension project – you may already know her from meetings in the area. Jeannie is always keen to hear how you'd like your area to benefit – environmentally, socially and economically – from the project.

If you can not make it to the exhibitions but would like to ask any questions and share your views, you can write to or email Jeannie at the address on the back cover of this newsletter.

**She'd love to hear from you.**



## Where are we now

We are currently building Kype Muir Wind Farm and the 26 turbines should be generating electricity by January 2019. The extension to Kype Muir Wind Farm was granted planning permission in January 2017 for 15 turbines:

- 7 x max height of 132m blade to tip
- 8 x max height of 152m blade to tip

Given changes to the way onshore wind farms are funded, we have been looking at ways to optimise the generation efficiency so that we can build Kype Muir Extension without subsidy. This newsletter will show you the changes we are proposing to improve generating efficiency, as well as give you an update on the construction of Kype Muir Wind Farm.



PROJECT UPDATE:

# Kype Muir

The construction of Kype Muir wind farm began in March 2017 and the turbines will be generating electricity to power our homes, schools and businesses in January 2019.

Standing by our commitment to deliver significant benefits to the local economy, the wind farm has already supported over 60 local businesses with over £14m being spent on products and services within 30km of the wind farm.

## Key figures

£14.5M\*

CONNECT2RENEWABLES  
SPEND TO DATE

£81.4M\*

ESTIMATED FUTURE  
CONNECT2RENEWABLES SPEND

£101.1M\*

TOTAL CONNECT2RENEWABLES  
BENEFIT OVER LIFETIME OF THE SITE

\*Within 30km of the site

## Key project facts

Number of turbines: 26

Turbine dimensions: Maximum height of 132m to blade tip

Lifespan: 25 years in operation

Location:

Situated in the Kype Forest approximately 5km south of Strathaven

Potential amount of energy generated:

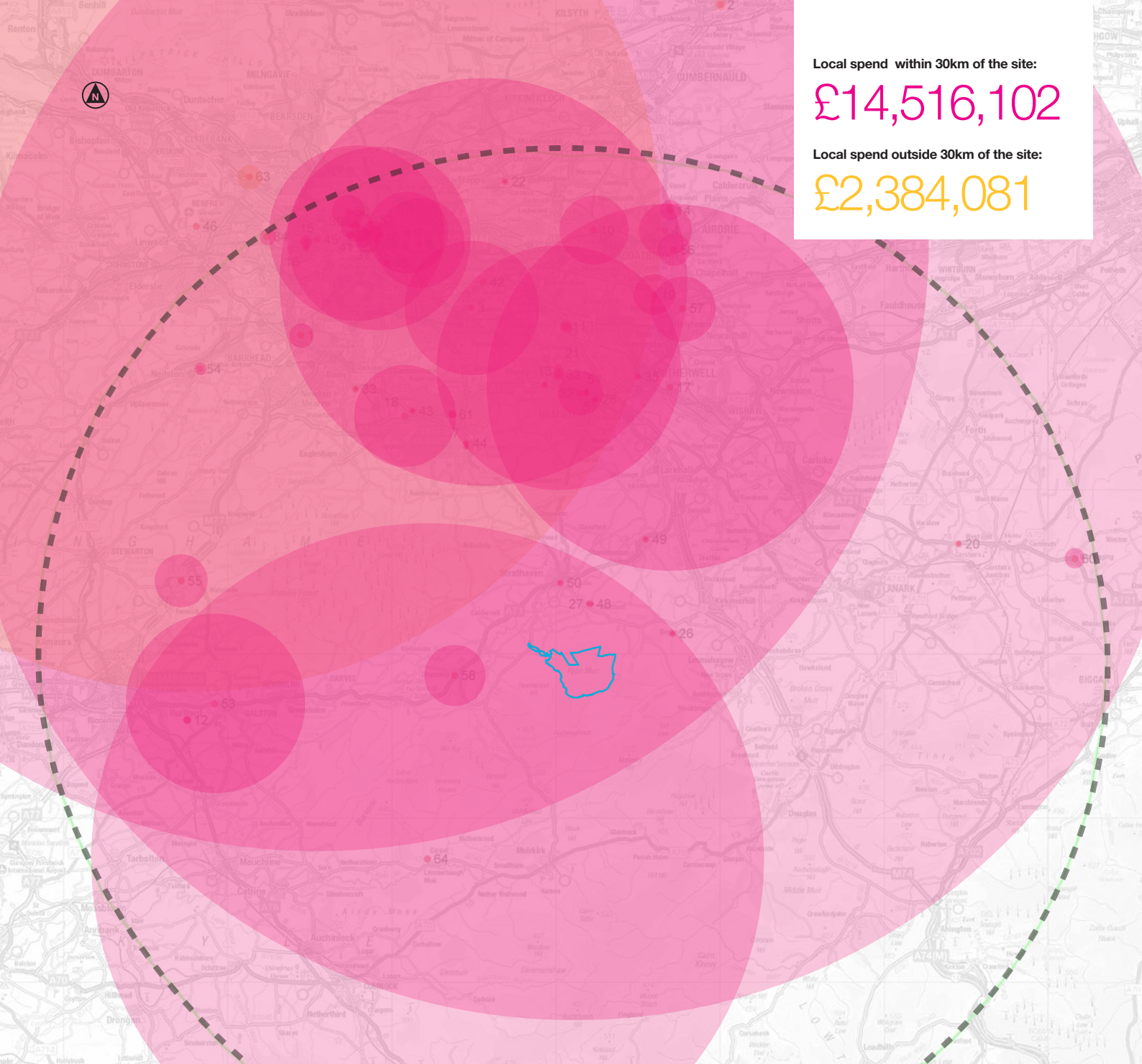
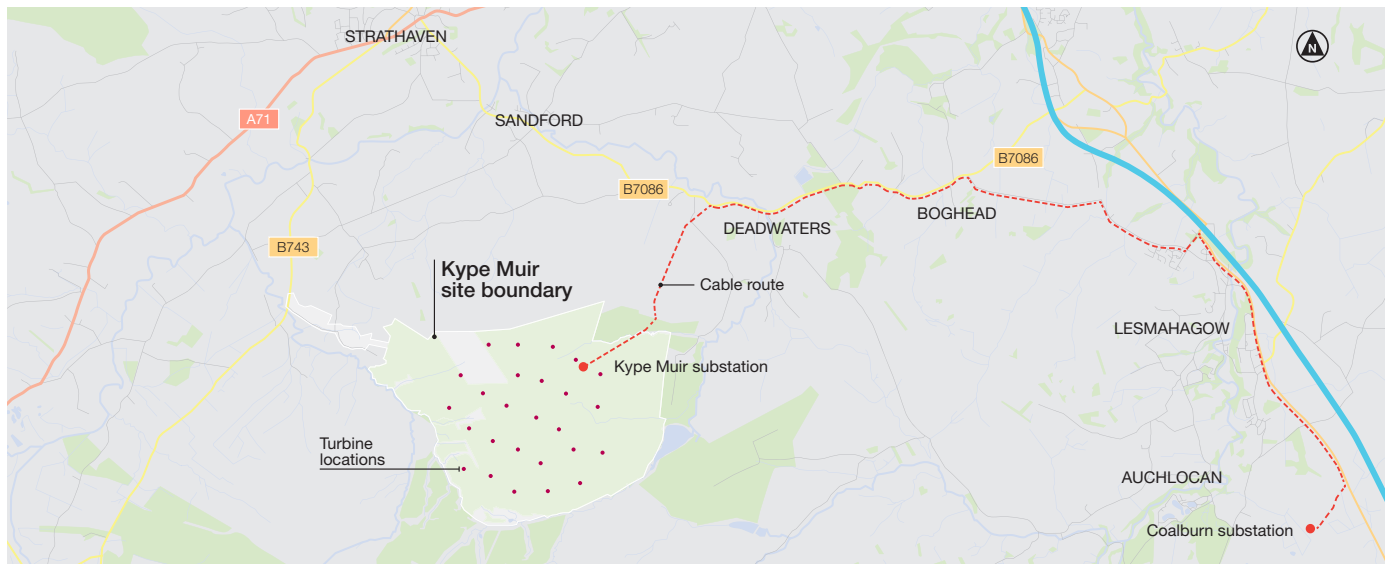
Installed capacity of **88.4MW**, which will provide electricity for approximately **63,500** homes. This is the equivalent to the removal of 35,280 petrol cars from the roads each year

\*\*Figures are approximate and are based on calculations that can be found at [www.banksgroup.co.uk/projects/renewables/kype-muir/scheme-details](http://www.banksgroup.co.uk/projects/renewables/kype-muir/scheme-details)

Grid connection:

Via underground cables connecting to Coalburn substation.

## Location and layout



## Ensuring that the local economy benefits

We have already spent over £14.5M within 30km of the wind farm, with over £6.2M on local plant suppliers and sub-contractors to deliver the civil works on site. The 'Heat Map' above shows where these companies are based and how much has been spent with each.

- Site boundary
- 30km radius from site
- Spend within 30km of the site**
  - £50,000 spent
- Spend outside 30km of the site**
  - £50,000 spent



WHAT WE'VE DONE SO FAR:

# Kype Muir construction update

## Tracks and road network

To facilitate the delivery of the turbine components, we have created over 25km of access tracks on the Kype Muir site. The turbine components are due to begin arriving in summer 2018 and to avoid road disruption the larger parts may be arriving overnight, under police escort. To ensure the large parts can access the site, our contractor, RJ McLeod has been improving part of the road network between the Canderside Toll roundabout and the Kype Muir site.



Cable installation on site

## On-site electrical cable installation

To harness and transport the electricity generated from the turbines, 75km of cable has been installed on site. All the on site cabling works were completed in January 2018.

## Lambhill Road upgrade

In August 2016, Banks Renewables appointed local firm RJ McLeod to widen and improve Lambhill Road, which leads to the wind farms closest neighbours, residents at Lambhill Steadings.

*"Working with Banks Renewables has been a seamless experience. They have kept us informed through every stage of the development ensuring we are fully in the loop. We are really pleased with the investment in the local areas and also the development of Lambhill Road."*

**PAUL DENNING**  
RESIDENT, LAMBHILL ROAD



BEFORE: Lambhill Road in August 2016



AFTER: The upgraded Lambhill Road with Site Agent, Jamie Forsyth from RJ McLeod



Turbine foundation

## Turbine foundations

In preparation for the expected arrival of the turbine components, multiple contractors have been working on site to get the individual turbine locations ready, which has involved:

- Excavating over 600,000 tonnes of rock.
- Using over 17,000 tonnes of steel to create the foundation structure.
- Over 15,000m<sup>3</sup> of concrete poured into the bases.



# Benefiting your community

We are developing a community partnership with the communities surrounding the wind farm and we will continue to build on this partnership with the Kype Muir Extension to ensure your community directly benefits from our presence in the area.



Members of the KMCP were given an update on the construction works by the main contractor, RJ McLeod, which gave the members a clear understanding of the many different aspects of building a wind farm. The KMCP were then given a tour around the construction site to see the work first hand.

*"It was great to see first-hand how it is all coming together at the terrific new site."*

**GEORGE SMITH**  
CHAIR OF THE STONEHOUSE COMMUNITY COUNCIL AND THE ELECTED CHAIR OF THE KMCP

## The Kype Muir Community Partnership

The Kype Muir Community Partnership (KMCP) was created to ensure that local people are kept involved throughout the construction and operation of the new wind farm.

Once operational the KMCP will be responsible for agreeing how the community fund will be allocated to local community groups and projects. The combined community fund from Kype Muir and Kype Muir Extension would be in the region of £10.2M. Local communities would have influence over how this money is spent in their area.

## South Lanarkshire Renewable Energy Fund

In addition to the KMCP funding, 50% of the community benefit fund will be administered by South Lanarkshire Council's Renewable Energy Fund (REF). This fund will support projects within South Lanarkshire. Over the 25 year lifetime of the site it will contribute over £5.5m to local community projects. In the future, if you are interested in funding from the REF or you want more information please visit: [www.southlanarkshire.gov.uk/info/200168/getting\\_involved\\_in\\_your\\_community/744/renewable\\_energy\\_fund](http://www.southlanarkshire.gov.uk/info/200168/getting_involved_in_your_community/744/renewable_energy_fund)

## Who will be eligible for the Kype Muir Community Fund

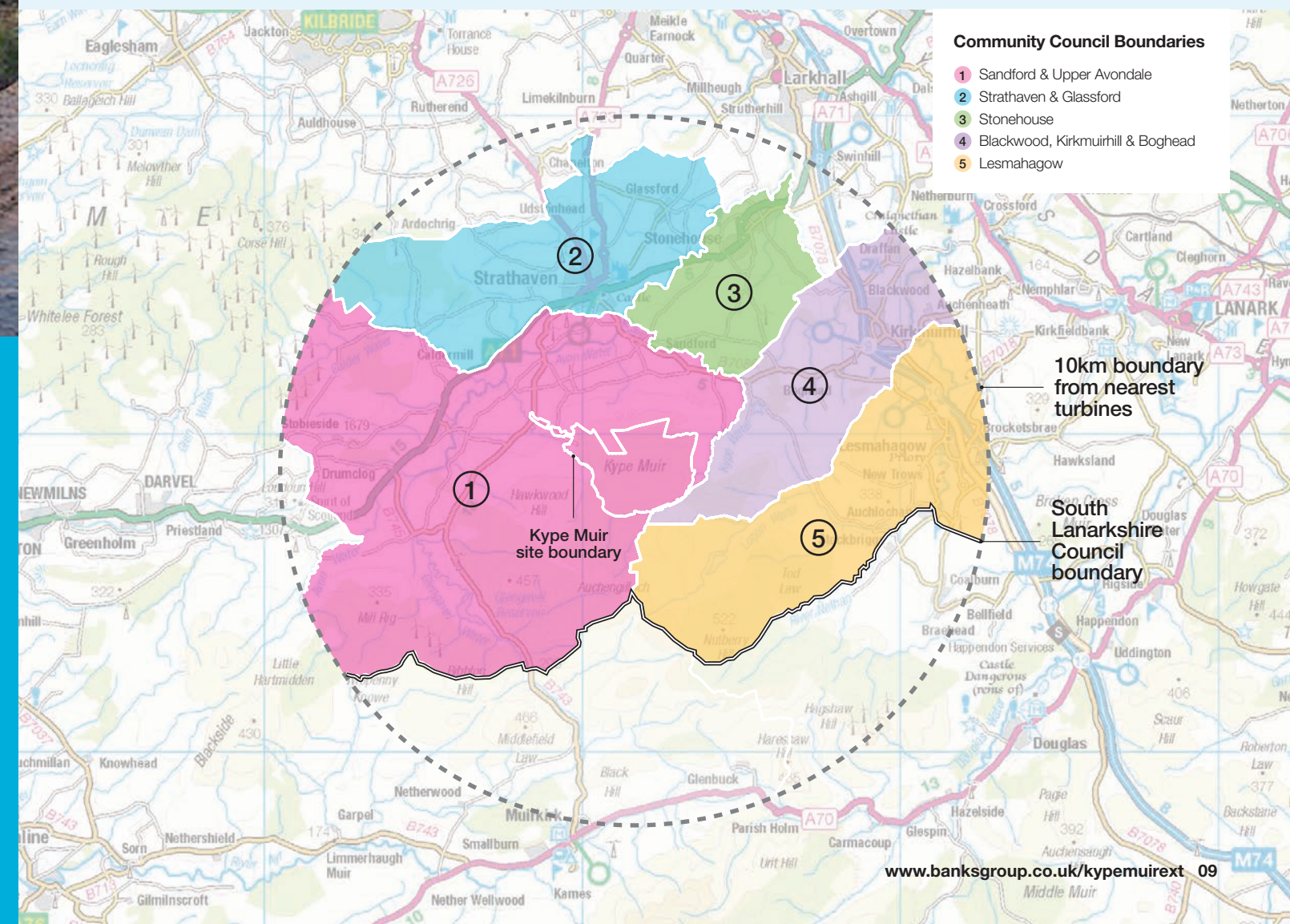
Communities within 10km of the wind farm and in South Lanarkshire will be eligible to apply to the fund. This will include:

- Sandford and Upper Avondale
- Strathaven & Glassford
- Stonehouse
- Lesmahagow
- Blackwood, Kirkmuirhill and Boghead

Communities are encouraged to develop Local Action Plans so that they can get best value from the Kype Muir and Extension funding by developing long term projects that the fund could help attract match funding from other streams. Priority will be given to projects identified in the Community Action Plans of the five areas listed above.

Community groups and voluntary organisations operating within and benefiting people who live in the eligible Community Council areas will be considered for grant funding. Examples of typical eligible groups and voluntary organisation and types of projects are:-

- Playgroups
- Youth clubs
- Sports clubs and facilities
- The Scout and Guide Movement
- Senior citizens clubs and activities
- Village Halls
- Church Halls
- Community Council projects
- Local charities
- Environmental projects



### Community Council Boundaries

- 1 Sandford & Upper Avondale
- 2 Strathaven & Glassford
- 3 Stonehouse
- 4 Blackwood, Kirkmuirhill & Boghead
- 5 Lesmahagow

10km boundary from nearest turbines

South Lanarkshire Council boundary



WHAT WE'VE DONE SO FAR:

# Connect2Renewables

The Kype Muir Wind Farm Extension will continue and significantly add to the contribution we have already made to your local community through the Connect2Renewables initiative

Current estimates show that over the lifetime of the Kype Muir Wind Farm over £100m will be invested within 30km of the wind farm.

Banks Renewables will continue to ensure local businesses are given every opportunity to provide the project with goods and services. Our Connect2Renewables Charter sets out how we will deliver the maximum level of economic benefit and you can view the charter at: [www.banksgroup.co.uk/renewables/connect2renewables](http://www.banksgroup.co.uk/renewables/connect2renewables)

## C2R COMMITMENT

We shall:

- Maximise contracting opportunities for local firms
- Give priority to placing local businesses on tender lists wherever possible
- Make local benefits and the employment of local labour a material consideration when awarding contracts
- Develop direct training and employment opportunities for local people on our wind farm projects
- Work in partnership with South Lanarkshire Council to support improved access to further education, employment and training for local people
- Target overall minimum economic benefit to local economy of £500,000 per installed megawatt over the life of the project

## OUR INVITATION TO LOCAL BUSINESS

If you are a local business with these types of skills then please come along to one of our exhibitions to find out more. Businesses attending will be able to meet members of the Banks team, add their business to a preliminary tenders list and network with other local companies.



## CASE STUDY: Plant hire

Maintaining our commitment to support neighbouring businesses, local plant hire company, Drumclog, which is located about five miles from Kype Muir, was awarded a six-figure contract to hire plant for the civil works on site. This included excavators used for digging trenches for cabling, foundations, site tracks and preparing land for control buildings.

Another six-figure contract was awarded to Glasgow based AB2000 to also provide plant machinery (pictured opposite) for the civil works, which included excavator, dozer and dump truck hire.



*"It's good to see a developer prioritising local firms throughout the supply chain – and then sticking to their word. Our contract is principally with RJ McLeod, who likewise are committed to using local businesses wherever possible thanks in part to their agreement of the C2R framework. This is a very large contract for us and it is important to be able to secure the work for our teams – which in turn provides greater benefit to local communities."*

**GORDON CAMPBELL**  
COMMERCIAL MANAGER, HILLHOUSE QUARRY GROUP

## CASE STUDY: Hillhouse Quarry, near Muirkirk

As a result of our Connect2Renewables (C2R) initiative, in partnership with South Lanarkshire Council, a seven figure contract was awarded to a local quarry near Muirkirk, which provided sand and gravel for the production of concrete.

Around 15,000m<sup>3</sup> of concrete has been produced for the wind farm with four permanent members of staff needed to make the concrete on-site, as well as an off-site support team, with work taking place over four months.





## PROJECT DETAILS:

# Kype Muir Extension

We were granted planning permission for the Kype Muir Extension in January 2017 for 15 turbines, which would increase the total generating capacity of Kype Muir Wind Farm from 88.4MW to 163.4MW

We have been looking at ways to optimise the Kype Muir wind farm extension and make efficiencies, so that we can continue to share the social, economic and environmental benefits with local communities.

We will be submitting details to the Scottish Government and we will be holding exhibitions to provide more details on the proposals.

## Proposal changes comparison

### SEPTEMBER 2016 (APPROVED)

Number of turbines: 15

#### Dimensions of turbines:

7 turbines with a maximum height of 132m to blade tip  
8 turbines with a maximum height of 152m to blade tip

Lifespan: 25 years in operation

#### Potential amount of energy generated:

Installed capacity of up to 60MW

#### Grid connection:

Via underground cables connecting to Coalburn substation, sharing the same connection as Kype Muir Wind Farm.

### FEBRUARY 2018 (PROPOSED)

Number of turbines: 15 (*no change*)

#### Dimensions of turbines:

4 turbines will have a maximum height of 156m to blade tip  
3 turbines will have a maximum height of 176m to blade tip  
4 turbines will have a maximum height of 200m to blade tip  
4 turbines will have a maximum height of 220m to blade tip

Lifespan: 30 years in operation

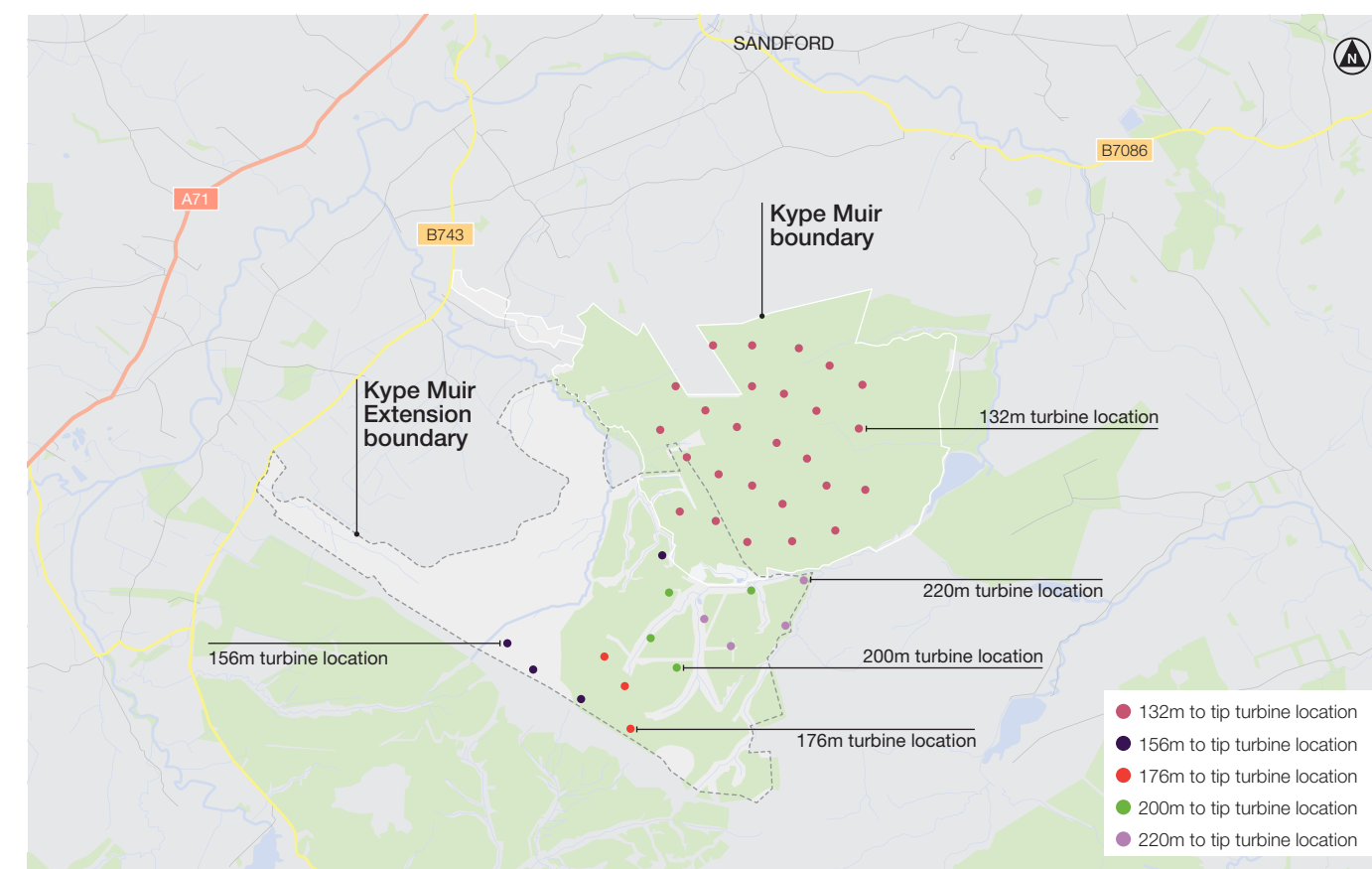
#### Potential amount of energy generated:

Installed capacity of up to 75MW

#### Grid connection:

Via underground cables connecting to Coalburn substation, sharing the same connection as Kype Muir Wind Farm. (*no change*)

## Kype Muir location and the proposed Extension layout



## Design considerations

- **LANDSCAPE AND VISUAL** – Minimising the perceived landscape and visual impact while maximising output was a key driver in the design of the amendments. We believe that our new turbine layout design (which takes into account the layout of Kype Muir Wind Farm) achieves the right balance between turbine heights and energy output.
- **TURBINE HEIGHTS** – We have sought to sensitively optimise the output of the extension by increasing the height of turbines
- **NOISE** – the site has been designed to fully comply with national guidance on acceptable noise limits.
- **ARCHAEOLOGY** - There are no scheduled monuments or listed buildings within the site boundary and no part of the wind farms lie within a conservation area.
- **ECOLOGY AND ORNITHOLOGY** – All findings from the preliminary investigations have been taken into consideration and there is not expected to be any significant effects as a result of this development.
- **WIND MONITORING MAST** – The two installed met masts at the Kype Muir site allows us to undertake a full noise and wind monitoring assessment. We also intend to erect another mast on the extension site - for which we already have planning permission.



# More efficient turbines, more benefits

In addition to the benefits the Kype Muir Wind Farm is already delivering and will continue to deliver, the amended Kype Muir Extension would result in even more social, economic and environmental benefits being delivered in the local area throughout the lifetime of the project.

£188M

INVESTMENT INTO  
THE SCOTTISH  
ECONOMY

£159M

TOTAL LOCAL  
INVESTMENT

1,102

JOBS INDIRECTLY  
SUPPORTED

£18.5M

COMMUNITY  
BENEFIT FUND

£47M

BUSINESS RATES

£40.9M

VALUE OF POSSIBLE  
LOCAL CONTRACTS

£159M

SERVICE AND  
MAINTENANCE  
CONTRACT VALUE

26km

OF NEW  
RECREATIONAL  
TRACKS

134,292\*

HOUSEHOLDS PROVIDED  
WITH GREEN ELECTRICITY  
ANNUALLY

74,753\*

PETROL CARS TAKEN OFF  
THE ROAD - ANNUAL CARBON  
SAVING EQUIVALENT

100m to tip turbine at  
West Durham Wind Farm

\*Sources can be found at [www.banksgroup.co.uk/projects/renewables/kype-muir-extension/scheme-details-2](http://www.banksgroup.co.uk/projects/renewables/kype-muir-extension/scheme-details-2)



# Get involved

If you have any questions about the project or would like find out how to apply for funding for local community projects, please come along to one of our exhibitions or get in touch using the details below:



Jeannie Kielty, Banks Renewables, 2nd Floor,  
Block C, Brandon Gate, Leechlee Road,  
Hamilton, Lanarkshire ML3 6AU



[kypemuirext@banksgroup.co.uk](mailto:kypemuirext@banksgroup.co.uk)



0191 378 6100 or 0844 209 1515\*



[www.banksgroup.co.uk/kypemuirext](http://www.banksgroup.co.uk/kypemuirext)



@The\_Banks\_Group



[www.youtube.com/TheBanksGroup](http://www.youtube.com/TheBanksGroup)

\*Calls to 0844 numbers are charged at local rate from a BT landline, charges from other providers and mobile networks may vary.

**BANKS**Renewables  
development with care