

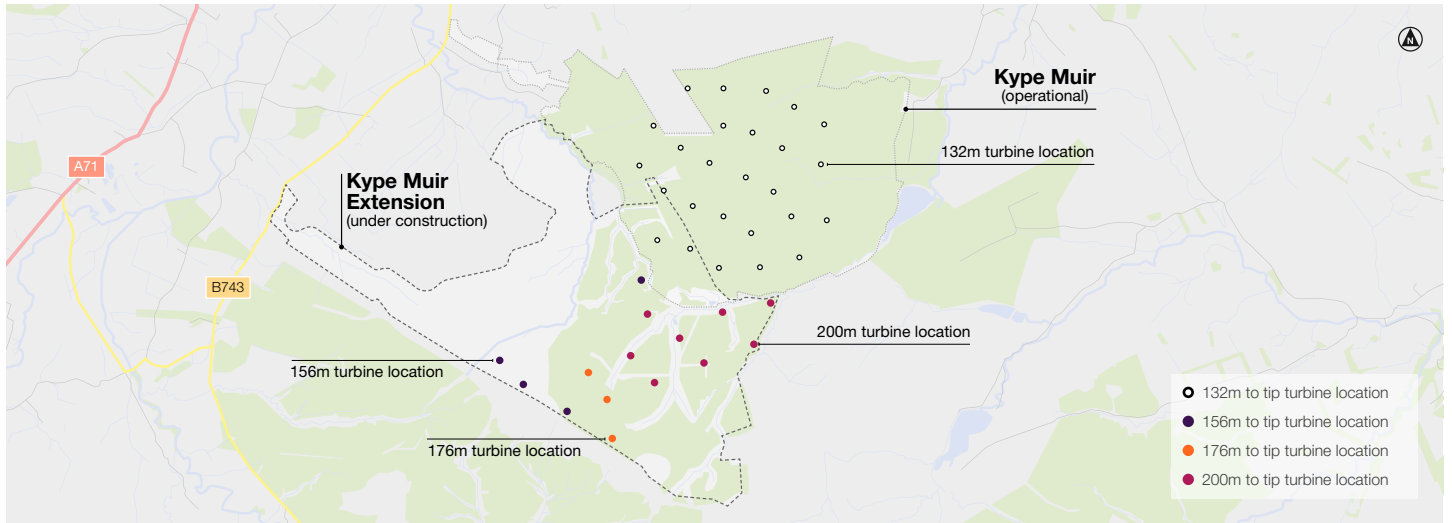
Kype Muir Wind Farm & Extension

Generating green electricity. Generating local benefits.



Find out more

TURBINE LOCATIONS



KYPE MUIR

Number of turbines: 26

Turbine dimensions: 132m to blade tip

Lifespan: 25 years in operation

Current land use: Commercial forestry

Location: Situated in the Kype Forest approximately 5km south of Strathaven

Potential amount of energy generated: Installed capacity of up to 88.4MW, which will provide electricity for approximately 70,000 homes.

KYPE MUIR EXTENSION - UNDER CONSTRUCTION

Number of turbines: 15

Turbine dimensions:

4 x 156m to blade tip / 3 x 176m to blade tip

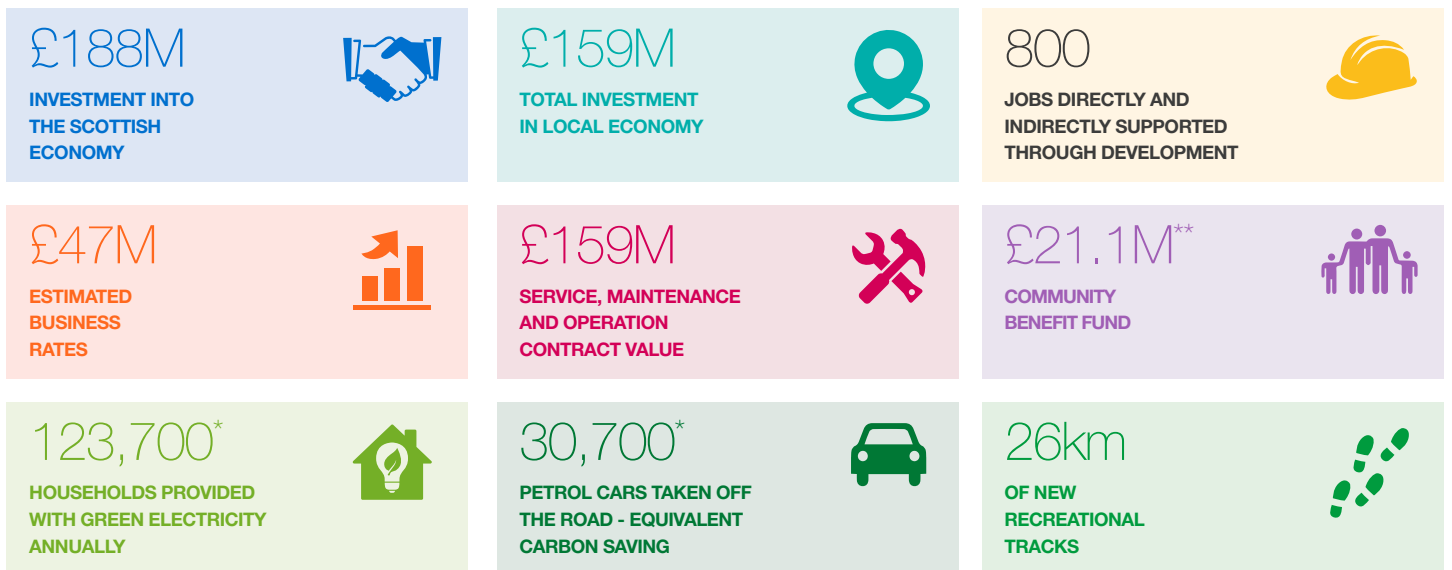
8 x 200m to blade tip - The 200m turbines are the tallest and most efficient onshore turbines ever erected in the UK.

Lifespan: 30 years in operation

Potential amount of energy generated: Installed capacity of up to 67.2MW, which could provide electricity for approximately 53,700 homes.

Grid connection: The connection to the UK grid is live, several turbines have been connected and the site will be fully operational in early 2023.

COMBINED SOCIAL, ECONOMIC AND ENVIRONMENTAL BENEFITS



Figures based on a total combined output of 155.6MW. *Sources can be found at www.banksgroup.co.uk/projects/renewables/kype-muir-extension/scheme-details-2
 **Based on £5,000 per MW installed per annum. 25 years for Kype Muir and 30 years for Kype Muir Extension