

Kype Muir Wind Farm Extension

Generating green electricity, generating local benefits

VARIATION SUBMISSION - MAY 2018

Key project benefits

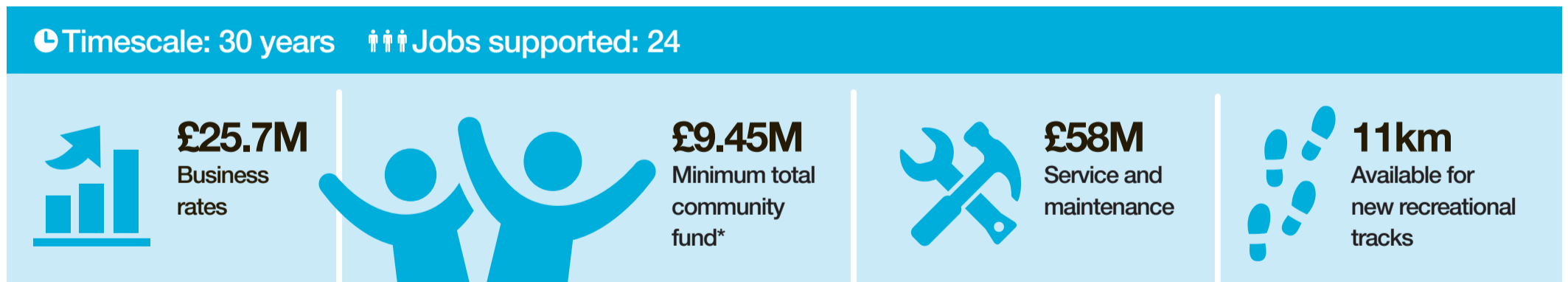


Benefits throughout project lifetime

CONSTRUCTION



OPERATION & MAINTENANCE



ENVIRONMENTAL BENEFITS



DECOMMISSIONING



*Based on installed capacity of 63MW

**This figure has been based on the Scottish Government's carbon calculator using a capacity factor of 40% and household consumption figures from the following source - https://assets.publishing.service.gov.uk/government/uploads/system/uploads/attachment_data/file/633503/ECUK_2017.pdf

***Emissions based on figures for a medium petrol car producing 0.313 kgCO2/mile (<https://www.gov.uk/government/publications/greenhouse-gas-reporting-conversion-factors-2017>) and an average annual mileage of 7,800 miles (<https://www.ractfoundation.org/motoring-faqs/mobility#a24>) (<https://www.gov.uk/government/statistical-data-sets/nts09-vehicle-mileage-and-occupancy#table-nts0901>)